

Glorious Jerusalem

for
Jerusalem Evangelical Lutheran Church
Schwenksville, Pennsylvania

Jaroslav Vajda 1989

Paul Bouman 1989

Glo-ri-ous Je-ru-sa-lem and Zi-on her gem, Home of beau-ty,

5

joy and peace and heav-en-ly grace:

1. Bea-con beck-on-ing to all,
2. There the Sav-ior long fore-told,
3. That same glo-ry fills this place
4. There at last the per-fect place,

9

mind-ful child and prod-i-gal,
there the Sav-ior twelve years old,
with our God's as-tound-ing grace,
there one great har-mo-nious race,

pil-grims on a hol-i-day,
there the Sav-ior cra-ci-fied,
lives and hopes and peace re-stored
like her Bride-groom glo-ri-fied,

13

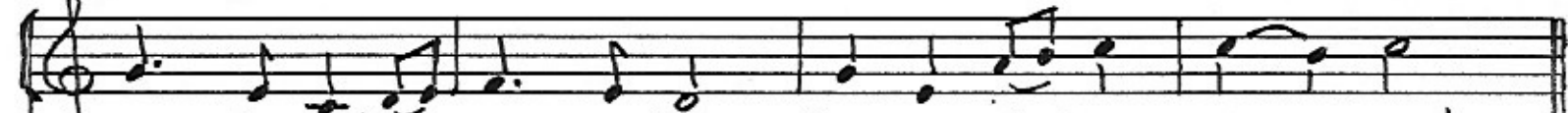
trio



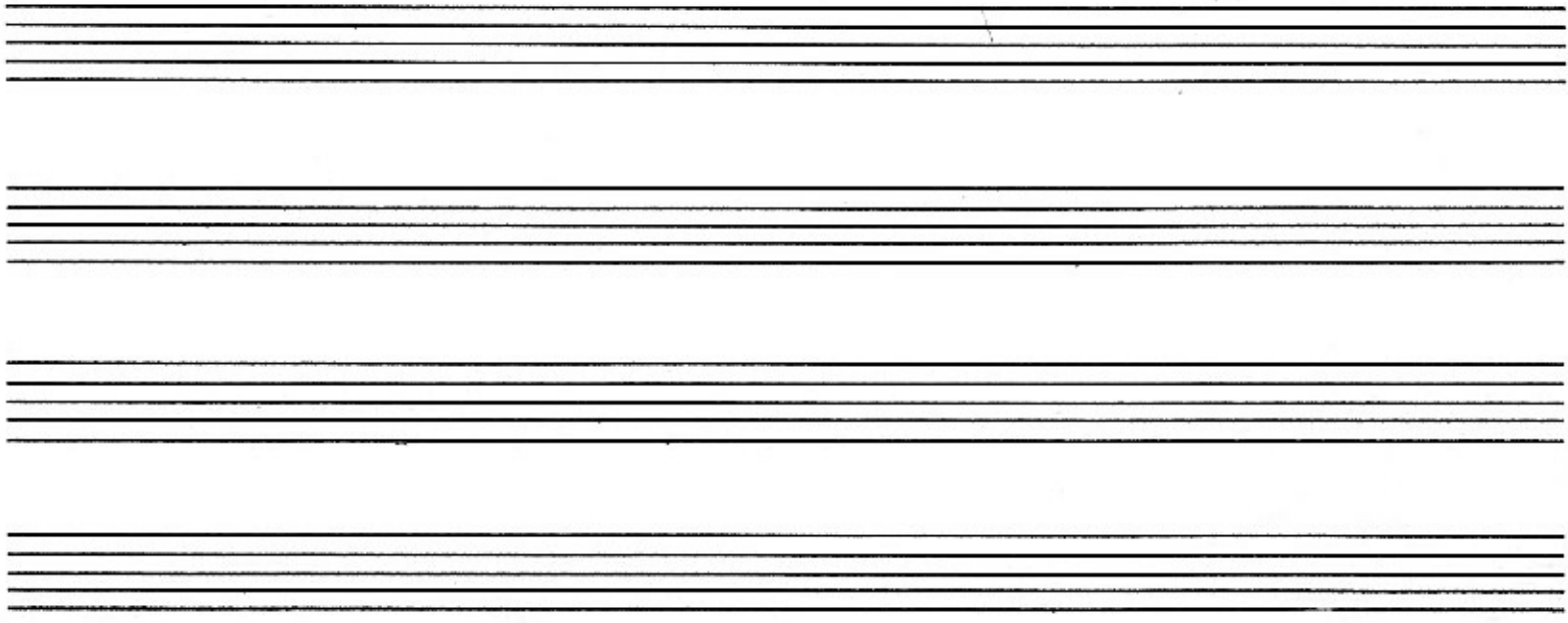
chant- ing psalms a- long the way:
there the Sav- ior glo- ri- fied: Al- le- lu- ia! Al- le- lu- ia!
by the sac- ra- ments and Word:
sings the Church His glow- ing Bride:



17



Praise the Lord, Je- ru- sa- lem, Praise your God, O Zi- on!



Performance suggestions:

Congregation sings measures 1-6 and 15-20 (the beginning and ending refrains) throughout, and joins the choir on st. 4

Full choir sings stanza 1 in unison (meas. 7-14)

Women of the choir sing stanza 2 in unison (meas. 7-14)

Men of the choir sing stanza 3 in unison (meas. 7-14)

Choir and congregation sing stanza 4. Sopranos of the Choir sing the descant on the final refrain.

This descant may be reinforced by a trumpet or any other suitable instrument.

The image shows a handwritten musical score for a hymn. It consists of two systems of staves. The first system has two staves: the top staff is labeled 'Descant' and the bottom staff is labeled 'Melody'. The lyrics are: 'Al-le-lu-ia! Al-le-lu-ia! Praise the Lord, Je-ru-sa-lem,'. The second system also has two staves, with the lyrics: 'Praise your God, O Zi-on!'. The music is written in a simple, clear style with treble clefs and a key signature of one flat.

Handwritten musical notation on a grand staff (treble and bass clefs). The music is in 4/4 time. The first staff contains a melodic line with eighth and sixteenth notes. The second staff contains a bass line with chords and some rhythmic notation.

Handwritten musical notation on a grand staff. The first staff continues the melodic line with some triplet-like figures. The second staff contains a bass line with chords and rhythmic notation.

Handwritten musical notation on a grand staff. The first staff continues the melodic line with some triplet-like figures. The second staff contains a bass line with chords and rhythmic notation.

Handwritten musical notation on a grand staff. The first staff continues the melodic line with some triplet-like figures. The second staff contains a bass line with chords and rhythmic notation.

Handwritten musical notation on a grand staff. The first staff continues the melodic line with some triplet-like figures. The second staff contains a bass line with chords and rhythmic notation.

Handwritten musical notation on a grand staff. The first staff continues the melodic line with some triplet-like figures. The second staff contains a bass line with chords and rhythmic notation.

