

HYMN SETTINGS FOR PIANO

1962.09

1. All Glory Laud and Honor
2. Christ the Life of All the Living
3. Christ the Lord is Risen Today
4. Come Thou Almighty King
5. From Heaven Above
6. Hyfrydol
7. Go to Dark Gethsemane
8. Gott sei dank
9. Jesus Christ is Risen Today, Alleluia
10. Let Us All with Gladsome Voice
11. Now Rest Beneath Night's Shadow
12. Now Sing We, Now Rejoice
13. Now Thank we All Our God
14. O Dearest Jesus, What Law
15. O Sacred Head, Now Wounded
16. O Jesus, I Have Promised
17. Our God, Our Help in Ages
18. Praise God the Lord Ye Sons
19. Praise to the Lord the Almighty
20. Quem Pastores
21. The Church's One Foundation
22. There is a Fountain
23. Vater Unser im Himmelreich
24. We All Believe in One True God
25. When I Survey the Wondrous Cross
26. Winchester Old
27. Ye Watchers and Ye Holy Ones

CHRIST, THE LIFE OF ALL THE LIVING

TLH: 151

Handwritten musical notation for the first system, featuring a treble and bass clef with a key signature of one sharp (F#) and a 4/4 time signature. The melody is written in the treble clef, and the accompaniment is in the bass clef. The piece concludes with a double bar line and repeat dots.

Handwritten musical notation for the second system, continuing the melody and accompaniment from the first system. It includes a treble and bass clef, a key signature of one sharp, and a 4/4 time signature.

Handwritten musical notation for the third system, continuing the melody and accompaniment. It includes a treble and bass clef, a key signature of one sharp, and a 4/4 time signature. The system ends with a double bar line and repeat dots.

RWH/63

COME THOU ALMIGHTY KING

TLH: 239

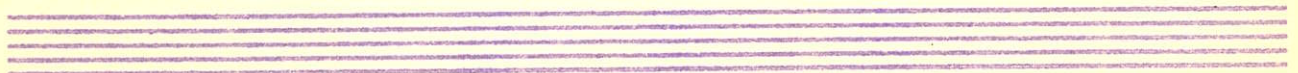
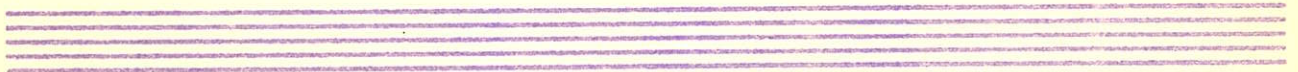
Handwritten musical notation for the first system. It consists of two staves joined by a brace on the left. The key signature is one sharp (F#) and the time signature is 3/4. The music begins with a treble clef and a common time signature 'C' that is crossed out and replaced with '3/4'. The melody in the treble staff starts with a quarter note G4, followed by quarter notes A4, B4, and C5. The bass staff provides accompaniment with quarter notes G3, A3, and B3. A dynamic marking 'p.' is present in the second measure of the treble staff.

Handwritten musical notation for the second system. It consists of two staves joined by a brace on the left. The key signature is one sharp (F#) and the time signature is 3/4. The melody in the treble staff continues with quarter notes D5, E5, and F#5. The bass staff continues with quarter notes C4, D4, and E4. A dynamic marking 'p.' is present in the second measure of the treble staff.

Handwritten musical notation for the third system. It consists of two staves joined by a brace on the left. The key signature is one sharp (F#) and the time signature is 3/4. The melody in the treble staff continues with quarter notes G5, A5, and B5. The bass staff continues with quarter notes F#3, G3, and A3. A dynamic marking 'p.' is present in the second measure of the treble staff.

Handwritten musical notation for the fourth system. It consists of two staves joined by a brace on the left. The key signature is one sharp (F#) and the time signature is 3/4. The melody in the treble staff continues with quarter notes C6, B5, and A5. The bass staff continues with quarter notes B3, C4, and D4. A dynamic marking 'p.' is present in the second measure of the treble staff.

RWH/63



153 TLH  
640

Richard Hillert

# HYFYDOL

TLH: 442/423

Handwritten musical notation for the first system. It consists of two staves: a treble clef staff and a bass clef staff. The time signature is 3/4. The key signature has one flat (B-flat). The music begins with a treble clef staff containing a half note G4, followed by quarter notes A4, Bb4, C5, D5, E5, F5, and G5. The bass clef staff contains a half note G3, followed by quarter notes F3, E3, D3, and C3.

Handwritten musical notation for the second system. It consists of two staves. The treble clef staff continues with quarter notes G5, F5, E5, D5, C5, Bb4, A4, and G4. The bass clef staff continues with quarter notes B2, A2, G2, F2, E2, D2, and C2. A dashed line connects the G5 note in the treble staff to the G2 note in the bass staff.

Handwritten musical notation for the third system. It consists of two staves. The treble clef staff continues with quarter notes F5, E5, D5, C5, Bb4, A4, G4, and F4. The bass clef staff continues with quarter notes B1, A1, G1, F1, E1, D1, and C1.

Handwritten musical notation for the fourth system. It consists of two staves. The treble clef staff continues with quarter notes E4, D4, C4, Bb3, A3, G3, F3, and E3. The bass clef staff continues with quarter notes B0, A0, G0, F0, E0, D0, and C0.

Handwritten musical notation for the fifth system. It consists of two staves. The treble clef staff continues with quarter notes D3, C3, Bb2, A2, G2, F2, E2, and D2. The bass clef staff continues with quarter notes B-1, A-1, G-1, F-1, E-1, D-1, and C-1. The system concludes with a double bar line.

RWH/63

# Go to Dark Gethsemane

X

Handwritten musical notation for the first system. It consists of two staves. The top staff is in treble clef with a key signature of one flat (B-flat) and a 4/4 time signature. It contains a melody of quarter and eighth notes. The bottom staff is in bass clef and contains a bass line of quarter notes. A red horizontal line is drawn above the top staff, spanning across the first two measures.

Handwritten musical notation for the second system, consisting of two staves. The top staff continues the melody from the first system. The bottom staff continues the bass line.

Handwritten musical notation for the third system, consisting of two staves. The top staff continues the melody. The bottom staff continues the bass line.

Handwritten musical notation for the fourth system, consisting of two staves. The top staff continues the melody. The bottom staff continues the bass line.

Two empty musical staves, one above the other.

Two empty musical staves, one above the other.

Gott sei Dank

TLH 2

~~TLH 2~~

The first system of handwritten musical notation consists of two staves. The upper staff begins with a treble clef and a key signature of one flat (B-flat). It contains a series of notes, including a whole note, followed by several quarter notes and eighth notes. The lower staff begins with a bass clef and contains notes corresponding to the upper staff, with some notes connected by a slur.

The second system of handwritten musical notation consists of two staves. The upper staff begins with a treble clef and a key signature of one flat. It contains a series of notes, including a whole note, followed by several quarter notes and eighth notes. The lower staff begins with a bass clef and contains notes corresponding to the upper staff, with some notes connected by a slur.

The third system of handwritten musical notation consists of two staves. The upper staff begins with a treble clef and a key signature of one flat. It contains a series of notes, including a whole note, followed by several quarter notes and eighth notes. The lower staff begins with a bass clef and contains notes corresponding to the upper staff, with some notes connected by a slur.

A set of empty musical staves, consisting of two staves with five lines each.

A set of empty musical staves, consisting of two staves with five lines each.

A set of empty musical staves, consisting of two staves with five lines each.

A set of empty musical staves, consisting of two staves with five lines each.

Copied 4/3/63

# Jesus Christ is Risen Today, Alleluia

TLH 194

Handwritten musical notation for the first system, consisting of a treble staff and a bass staff. The treble staff contains a melody with several notes and rests, including a measure with a '4' and a '+' sign. The bass staff contains a bass line with notes and rests.

Handwritten musical notation for the second system, consisting of a treble staff and a bass staff. The treble staff contains a melody with notes and rests. The bass staff contains a bass line with notes and rests.

Handwritten musical notation for the third system, consisting of a treble staff and a bass staff. The treble staff contains a melody with notes and rests. The bass staff contains a bass line with notes and rests.

Handwritten musical notation for the fourth system, consisting of a treble staff and a bass staff. Above the treble staff, the sequence of numbers "5 4 5 2 1 3 4 5 4 3 5" is written. The treble staff contains a melody with notes and rests. The bass staff contains a bass line with notes and rests.

Two empty musical staves at the bottom of the page, consisting of a treble staff and a bass staff.

# #97 Let Us All With Gladsome Voice

Handwritten musical notation for the first system. The top staff is in treble clef with a key signature of one flat (Bb) and a common time signature (C). The bottom staff is in bass clef. The music consists of several measures with notes and rests, including a fermata over a note in the second measure of the top staff.

Handwritten musical notation for the second system. The top staff is in treble clef with a key signature of one flat (Bb) and a common time signature (C). The bottom staff is in bass clef. The music consists of several measures with notes and rests.

Handwritten musical notation for the third system. The top staff is in treble clef with a key signature of one flat (Bb) and a common time signature (C). The bottom staff is in bass clef. The music consists of several measures with notes and rests, including a fermata over a note in the second measure of the top staff.

A set of empty musical staves consisting of two five-line staves.

A set of empty musical staves consisting of two five-line staves.

A set of empty musical staves consisting of two five-line staves.

A set of empty musical staves consisting of two five-line staves.



# NOW REST BENEATH NIGHT'S SHADOW

TLH: 554

Handwritten musical notation for the first system. It consists of two staves, treble and bass clef, with a 4/4 time signature and a key signature of one flat (B-flat). The music features a melody in the treble clef and a bass line in the bass clef. The melody begins with a quarter rest, followed by a quarter note G4, a quarter note A4, and a quarter note B4. The bass line starts with a quarter note G2, followed by quarter notes A2, B2, and C3. The system concludes with a quarter note D4 in the treble and a quarter note C2 in the bass.

Handwritten musical notation for the second system. It continues the piece with two staves. The treble clef melody has a quarter note D4, a quarter note E4, a quarter note F4, and a quarter note G4. The bass clef line has a quarter note D2, a quarter note E2, a quarter note F2, and a quarter note G2. The system ends with a quarter note A4 in the treble and a quarter note A2 in the bass.

Handwritten musical notation for the third system. The treble clef melody features a quarter note A4, a quarter note B4, a quarter note C5, and a quarter note B4. The bass clef line has a quarter note A2, a quarter note B2, a quarter note C3, and a quarter note D3. The system concludes with a quarter note A4 in the treble and a quarter note D3 in the bass.

Handwritten musical notation for the fourth system. The treble clef melody has a quarter note A4, a quarter note B4, a quarter note C5, and a quarter note B4. The bass clef line has a quarter note A2, a quarter note B2, a quarter note C3, and a quarter note D3. The system ends with a quarter note A4 in the treble and a quarter note D3 in the bass.

R.H. / 63



# #92 Now Sing We, Now Rejoice

Handwritten musical notation for the first system. It consists of two staves. The upper staff is in treble clef with a key signature of one sharp (F#) and a common time signature (C). The lower staff is in bass clef with a key signature of one sharp (F#). The music features a series of chords and single notes, primarily using half notes and quarter notes.

Handwritten musical notation for the second system. It consists of two staves. The upper staff is in treble clef with a key signature of one sharp (F#) and a common time signature (C). The lower staff is in bass clef with a key signature of one sharp (F#). The music continues with chords and single notes, including some beamed eighth notes.

Handwritten musical notation for the third system. It consists of two staves. The upper staff is in treble clef with a key signature of one sharp (F#) and a common time signature (C). The lower staff is in bass clef with a key signature of one sharp (F#). The music continues with chords and single notes, including some beamed eighth notes.

Handwritten musical notation for the fourth system. It consists of two staves. The upper staff is in treble clef with a key signature of one sharp (F#) and a common time signature (C). The lower staff is in bass clef with a key signature of one sharp (F#). The music continues with chords and single notes, including some beamed eighth notes.

Handwritten musical notation for the fifth system. It consists of two staves. The upper staff is in treble clef with a key signature of one sharp (F#) and a common time signature (C). The lower staff is in bass clef with a key signature of one sharp (F#). The music continues with chords and single notes, including some beamed eighth notes.

# NOW THANK WE ALL OUR GOD

TLH: 36

Handwritten musical notation for the first system. It consists of two staves, treble and bass clef, with a 3/2 time signature and a key signature of one flat (B-flat). The music begins with a treble clef and a 3/2 time signature. The first measure contains a treble clef, a B-flat key signature, and a 3/2 time signature. The melody in the treble clef starts with a quarter note G4, followed by quarter notes A4, B4, and C5. The bass clef accompaniment starts with a half note G3, followed by quarter notes A3 and B3. The system ends with a double bar line.

Handwritten musical notation for the second system. It consists of two staves, treble and bass clef. The treble clef staff contains a melody of quarter notes: G4, A4, B4, C5, B4, A4, G4. The bass clef staff contains a bass line of quarter notes: G3, A3, B3, C4, B3, A3, G3. A repeat sign is present at the end of the system.

Handwritten musical notation for the third system. It consists of two staves, treble and bass clef. The treble clef staff contains a melody of quarter notes: G4, A4, B4, C5, B4, A4, G4. The bass clef staff contains a bass line of quarter notes: G3, A3, B3, C4, B3, A3, G3. The system ends with a double bar line.

Handwritten musical notation for the fourth system. It consists of two staves, treble and bass clef. The treble clef staff contains a melody of quarter notes: G4, A4, B4, C5, B4, A4, G4. The bass clef staff contains a bass line of quarter notes: G3, A3, B3, C4, B3, A3, G3. The system ends with a double bar line.

RHM/63



Copied 3/10/63

~~X~~

O DEAREST JESUS, WHAT LAW

LH 143

Handwritten musical notation for the first system. The treble staff begins with a treble clef, a key signature of one flat (B-flat), and a common time signature. The melody consists of quarter notes and rests. The bass staff begins with a bass clef, a key signature of one flat, and a common time signature. The bass line consists of quarter notes and rests. A large red curved line is drawn above the first system.

Handwritten musical notation for the second system. The treble staff continues the melody with quarter notes and rests. The bass staff continues the bass line with quarter notes and rests.

Handwritten musical notation for the third system. The treble staff continues the melody with quarter notes and rests. The bass staff continues the bass line with quarter notes and rests.

Handwritten musical notation for the fourth system. The treble staff continues the melody with quarter notes and rests. The bass staff continues the bass line with quarter notes and rests.

Two empty musical staves, one above the other, consisting of five lines each.

Two empty musical staves, one above the other, consisting of five lines each.

# O SACRED HEAD, NOW WOUNDED

TLH:172

Handwritten musical notation for the first system, featuring a treble and bass clef with a 3/6 over 2/4 time signature. The music consists of quarter and eighth notes with stems pointing down, and some notes are connected by dashed lines.

Handwritten musical notation for the second system, including a repeat sign and a key signature change to one sharp (F#).

Handwritten musical notation for the third system, continuing the melodic and harmonic lines.

Handwritten musical notation for the fourth system, concluding the piece with a final cadence.

RH163

Two sets of empty musical staves at the bottom of the page.

O Jesus, I Have Promised / O Word of God Incarnate  
LH 294

Handwritten musical notation for the first system. The top staff is in treble clef with a key signature of one flat (B-flat) and a 4/4 time signature. The bottom staff is in bass clef. The music consists of several measures with notes and rests. A red 'X' is written above the second measure of the top staff.

Handwritten musical notation for the second system. The top staff is in treble clef with a key signature of one flat and a 4/4 time signature. The bottom staff is in bass clef. The music consists of several measures with notes and rests.

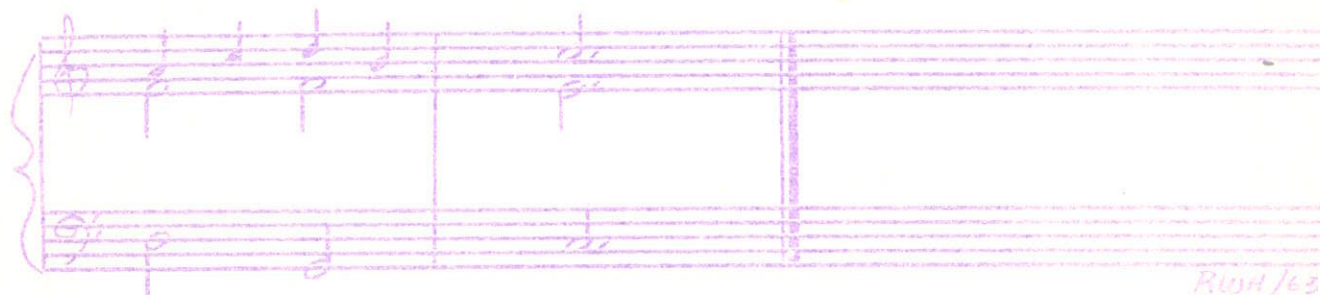
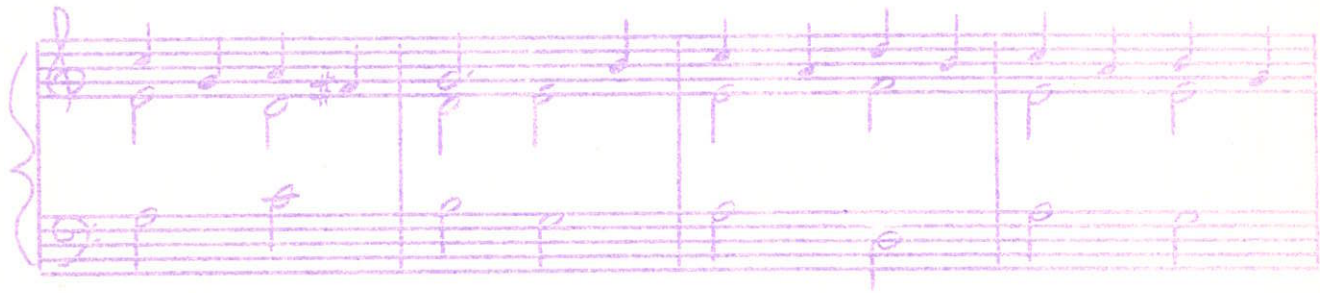
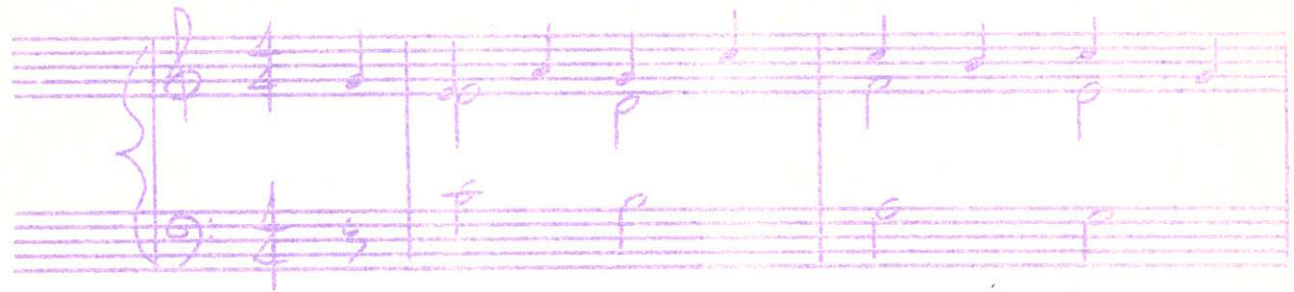
Handwritten musical notation for the third system. The top staff is in treble clef with a key signature of one flat and a 4/4 time signature. The bottom staff is in bass clef. The music consists of several measures with notes and rests.

Handwritten musical notation for the fourth system. The top staff is in treble clef with a key signature of one flat and a 4/4 time signature. The bottom staff is in bass clef. The music consists of several measures with notes and rests.

Two empty musical staves at the bottom of the page, consisting of five lines each.

OUR GOD, OUR HELP IN AGES PAST

TLH. 123



RWH/63



Praise God the Lord

Copied 12/7/62

Handwritten musical notation for the first system. The treble staff begins with a treble clef and a 4/4 time signature. The bass staff begins with a bass clef and a 4/4 time signature. The music consists of several measures with notes and rests.

Handwritten musical notation for the second system. The treble staff begins with a treble clef and a 4/4 time signature. The bass staff begins with a bass clef and a 4/4 time signature. The music consists of several measures with notes and rests.

Handwritten musical notation for the third system. The treble staff begins with a treble clef and a 4/4 time signature. The bass staff begins with a bass clef and a 4/4 time signature. The music consists of several measures with notes and rests.

Empty musical staff.

Empty musical staff.

Empty musical staff.

Empty musical staff.



# Praise to the Lord the Almighty

X

The first system of handwritten musical notation consists of two staves. The upper staff begins with a treble clef and a key signature of one sharp (F#). It contains five measures of music, with a brace on the first measure indicating a group of notes. The lower staff begins with a bass clef and a key signature of one sharp (F#), also containing five measures of music. A red curved line is drawn above the first two measures of the upper staff.

The second system of handwritten musical notation consists of two staves. The upper staff begins with a treble clef and a key signature of one sharp (F#). It contains five measures of music. The lower staff begins with a bass clef and a key signature of one sharp (F#), also containing five measures of music.

The third system of handwritten musical notation consists of two staves. The upper staff begins with a treble clef and a key signature of one sharp (F#). It contains five measures of music. The lower staff begins with a bass clef and a key signature of one sharp (F#), also containing five measures of music.

A set of four empty musical staves, consisting of two grand staves (treble and bass clefs).

A set of four empty musical staves, consisting of two grand staves (treble and bass clefs).

A set of four empty musical staves, consisting of two grand staves (treble and bass clefs).

A set of four empty musical staves, consisting of two grand staves (treble and bass clefs).

# THE CHURCH'S ONE FOUNDATION



HERE IS A FOUNTAIN (TUN 157)

Handwritten musical notation for the first system. It consists of two staves. The upper staff has a treble clef and a key signature of one flat (B-flat). The lower staff has a bass clef. A red horizontal line is drawn above the upper staff. The notation includes various notes, rests, and bar lines.

Handwritten musical notation for the second system, consisting of two staves with treble and bass clefs, continuing the piece.

Handwritten musical notation for the third system, consisting of two staves with treble and bass clefs.

Empty musical staff consisting of two lines.

Empty musical staff consisting of two lines.

Empty musical staff consisting of two lines.

Empty musical staff consisting of two lines.

# Vater Unser im Himmelreich [47]

Handwritten musical notation for the first system. It consists of two staves. The upper staff is in treble clef with a key signature of one sharp (F#) and a common time signature (C). The lower staff is in bass clef with a key signature of one sharp (F#) and a common time signature (C). The notation includes various notes, rests, and accidentals. A fermata is placed over the first measure of the upper staff. Below the lower staff, there are several chord symbols: 6, 6, 6, 6, 4, #, 6, 6.

Handwritten musical notation for the second system. It consists of two staves. The upper staff is in treble clef with a key signature of one sharp (F#) and a common time signature (C). The lower staff is in bass clef with a key signature of one sharp (F#) and a common time signature (C). The notation includes various notes, rests, and accidentals. A fermata is placed over the first measure of the upper staff. Below the lower staff, there are several chord symbols: 6, #, b, 6, 6, #, #, #.

Handwritten musical notation for the third system. It consists of two staves. The upper staff is in treble clef with a key signature of one sharp (F#) and a common time signature (C). The lower staff is in bass clef with a key signature of one sharp (F#) and a common time signature (C). The notation includes various notes, rests, and accidentals. A fermata is placed over the first measure of the upper staff. Below the lower staff, there are several chord symbols: 6, #, #, #, 6, 6.

Handwritten musical notation for the fourth system. It consists of two staves. The upper staff is in treble clef with a key signature of one sharp (F#) and a common time signature (C). The lower staff is in bass clef with a key signature of one sharp (F#) and a common time signature (C). The notation includes various notes, rests, and accidentals. A fermata is placed over the first measure of the upper staff. Below the lower staff, there are several chord symbols: 6, 6, 6, 6, #, #.

Two empty musical staves at the bottom of the page, consisting of two sets of five-line staves.

# We All Believe in Our One God ~~X~~

Handwritten musical notation for the first system, consisting of a treble clef staff and a bass clef staff. The treble staff contains a series of notes and rests, with a red oval drawn above it. The bass staff contains notes and rests.

Handwritten musical notation for the second system, consisting of a treble clef staff and a bass clef staff. The treble staff contains notes and rests, and the bass staff contains notes and rests.

Handwritten musical notation for the third system, consisting of a treble clef staff and a bass clef staff. The treble staff contains notes and rests, and the bass staff contains notes and rests.

Handwritten musical notation for the fourth system, consisting of a treble clef staff and a bass clef staff. The treble staff contains notes and rests, and the bass staff contains notes and rests.

Two empty musical staves, one treble clef and one bass clef.

Two empty musical staves, one treble clef and one bass clef.

WHEN I SURVEY THY WONDROUS CROSS

TLH:175

Handwritten musical notation for the first system. It consists of two staves: a treble clef staff and a bass clef staff. The time signature is 2/2. The key signature has one flat (B-flat). The melody in the treble staff begins with a quarter rest, followed by a quarter note G4, a quarter note A4, a quarter note B4, a quarter note C5, a quarter note B4, a quarter note A4, a quarter note G4, and a quarter note F4. The bass staff provides accompaniment with chords and single notes.

Handwritten musical notation for the second system. It consists of two staves: a treble clef staff and a bass clef staff. The melody in the treble staff continues with a quarter note E4, a quarter note D4, a quarter note C4, a quarter note B3, a quarter note A3, a quarter note G3, a quarter note F3, and a quarter note E3. The bass staff continues with accompaniment.

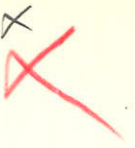
Handwritten musical notation for the third system. It consists of two staves: a treble clef staff and a bass clef staff. The melody in the treble staff continues with a quarter note D3, a quarter note C3, a quarter note B2, a quarter note A2, a quarter note G2, a quarter note F2, a quarter note E2, and a quarter note D2. The bass staff continues with accompaniment.

Handwritten musical notation for the fourth system. It consists of two staves: a treble clef staff and a bass clef staff. The melody in the treble staff continues with a quarter note C2, a quarter note B1, a quarter note A1, a quarter note G1, a quarter note F1, a quarter note E1, and a quarter note D1. The bass staff continues with accompaniment.

RH/p.3

Two sets of empty musical staves at the bottom of the page, each consisting of a treble clef staff and a bass clef staff.

WINCHESTER OLD (#31, 336, 445)



Copied 4/3/63



YE WATCHERS AND YE HOLY ONES



ALL GLORY, LAUD, AND HONOR.

T.L.H.: 160

All To glo-ry laud, and hon-or To thee, Re-deem-er,  
when the lips of child-ren Made sweet ho-san-nas

King-ning: Thou art the King of Is-rael, Thou

Da-vid's roy-al son, Who in the Lord's name com-est, The

King and Bless-ed One.

RH/63

# CHRIST, THE LIFE OF ALL THE LIVING

TLH: 151

Christ, the life of all the liv-ing, Christ the death of death our foe,  
Who, thy-self for me once giv-ing, To the dark-est depths of woe,

Through thy sufferings, death and mer-it I e-ter-nal life in-her-it:

thou-sand thou-sand thanks shall be, Dear-est Je-sus un-to me.

RHM/63



# CHRIST THE LORD IS RISEN TODAY

TLH 193

"Christ the Lord is risen to-day," Sons of men and

The first system of handwritten musical notation for the hymn. It consists of two staves: a treble clef staff and a bass clef staff. The key signature is one sharp (F#) and the time signature is 4/4. The lyrics are written below the notes.

an-gels say. Raise your joys and tri-umphs high;

The second system of handwritten musical notation. It continues the melody and accompaniment from the first system. The lyrics are written below the notes.

sing, ye heavns, and earth re-ply.

RWH 163

The third system of handwritten musical notation. It concludes the hymn with a double bar line. The lyrics are written below the notes. The number 'RWH 163' is written in the bottom right corner of the system.



# COME THOU ALMIGHTY KING

TLH: 239

Handwritten musical notation for the first system. It features a grand staff with a treble clef and a bass clef. The key signature is one sharp (F#) and the time signature is 3/4. The lyrics are: "Come, Thou al- mighty - y King, Help us thy".

Handwritten musical notation for the second system. The lyrics are: "name to sing, Help us to praise,".

Handwritten musical notation for the third system. The lyrics are: "Fa- ther all gla- ri- ous, O'er all vic- to- ri- ous,".

Handwritten musical notation for the fourth system. The lyrics are: "come and reign o- ver us, An- cient of days.".

RWH/63



# FROM HEAVEN ABOVE

TLH 85

A handwritten musical score for the first system of the hymn 'From Heaven Above'. It features a vocal line on a treble clef staff and a piano accompaniment on a bass clef staff. The key signature is one flat (B-flat) and the time signature is 4/4. The lyrics are: 'Ah, dear - est Je - sus ho - ly child, Make'.

A handwritten musical score for the second system of the hymn. It features a vocal line on a treble clef staff and a piano accompaniment on a bass clef staff. The lyrics are: 'me a bed, soft, un - de - filed, With - in my heart that'.

A handwritten musical score for the third system of the hymn. It features a vocal line on a treble clef staff and a piano accompaniment on a bass clef staff. The lyrics are: 'it may be A qui - et cham - ber kept for thee.' The system concludes with a double bar line. The initials 'RWH-62' are written in the bottom right corner of the system.



# Now Rest Beneath Night's Shadow

TLH: 554

Now rest be-neath night's shad-ow The wood-land,

field and mead-ow. The world in dum-ber lies,

But thou my heart a-wake thee, To prayer and song be-

take thee, Let praise to thy Cre-a-tor rise.

RWH/63



Ah, Holy Jesus  
O DEAREST JESUS, WHAT LAW HAST THOU BROKEN TLH:143

Ah, ho-ly Je-sus, how hast thou of-fend - ed

That man to judge thee hath in hate pre-tend - ed? By foes de-

rid - ed by thine arm re-ject - ed. Oh, most a-

flict - ed.

RH/63

# O SACRED HEAD, NOW WOUNDED

TLH:172

Handwritten musical notation for the first system. It consists of two staves. The top staff is in treble clef and the bottom in bass clef. The time signature is 3/6 over 2/4. The lyrics are: "O Now sa - cred head, now wound - ed, With scorn - ful - ly sur - round - ed, With". There are various musical notations including notes, rests, and accidentals.

Handwritten musical notation for the second system. It consists of two staves. The lyrics are: "grief and shame weighed down crown. O sa - cred head what glo -". There is a double bar line in the middle of the system. The music includes notes, rests, and accidentals.

Handwritten musical notation for the third system. It consists of two staves. The lyrics are: "ry, What bliss to name thee! yet, though despised and". The music includes notes, rests, and accidentals.

Handwritten musical notation for the fourth system. It consists of two staves. The lyrics are: "go - ry, joy to call thee mine." The music includes notes, rests, and accidentals.

RH 163

Two sets of empty musical staves, one in treble clef and one in bass clef, located at the bottom of the page.



OUR GOD, OUR HELP IN AGES PAST

TLH:123

Our God our help in a- ges, past, Our

This system of handwritten musical notation consists of two staves. The upper staff is in treble clef with a 4/4 time signature. The lower staff is in bass clef. The lyrics are written between the staves: "Our God our help in a- ges, past, Our". The music features a simple harmonic accompaniment with quarter and eighth notes.

hope for years to come. Our shel-ter from the storm-y blast And

This system of handwritten musical notation continues the piece. It features two staves with lyrics: "hope for years to come. Our shel-ter from the storm-y blast And". The melody continues with quarter and eighth notes, and the bass line provides a steady accompaniment.

our e-ter-nal home.

This system of handwritten musical notation concludes the piece. It features two staves with lyrics: "our e-ter-nal home.". The music ends with a double bar line. The bass line has some rests in the final measure.

RWH/63

Four sets of empty musical staves are located at the bottom of the page, arranged in two pairs of two staves each. They are drawn in purple ink and are currently blank.

# QUEM PASTORES

He whom shep-hards once came prais-ing,

A-wed by heav'n - ly light a - blaz - ing,

Cheered by an - gel news a - mazz-ing,

"King of glo - ry, Christ is born!"

PWH/02

