

Six Hymn Settings for

Organ and Brass Quartet

set 2

by

Walter L. Pelz

# Marion

Tune

Tpt I  
II

Brass (1)

Tbn. I  
II

Organ (1)



Copyright: Walter L. Pelz 1991

# Marion

Tune

Brass (2)

Organ (2)

# Sine Nomine

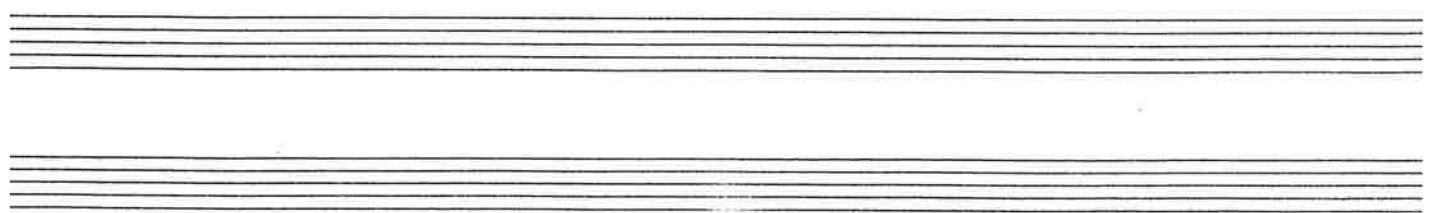
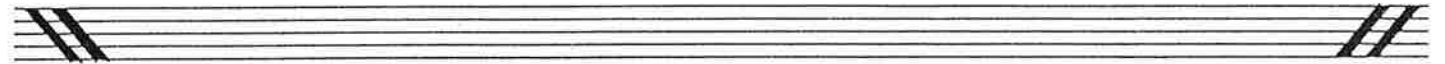
Tune

Tpt. I  
II

(Brass)  
(17)

Tbn. I  
II

Organ  
(1)



# Sine Nomine

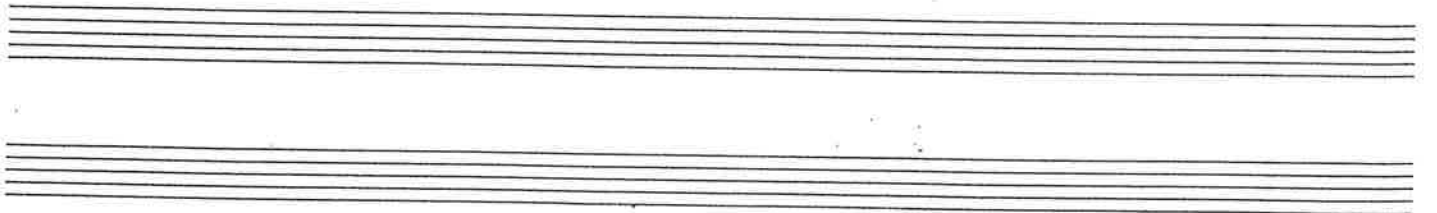
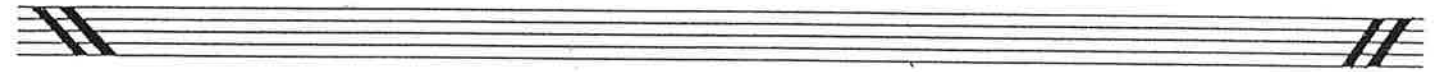
Tune

Tpt. I  
II

(Brass  
(2))

Tbn. I  
II

Organ  
(2)



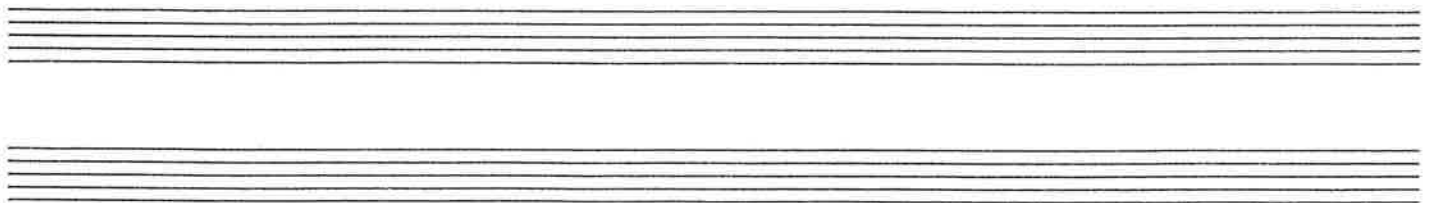
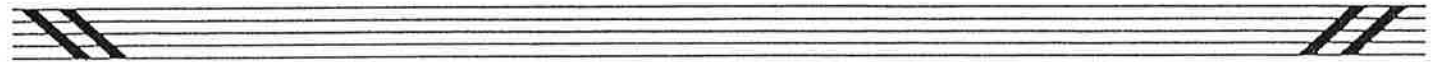
# Easter Hymn

Tune

Tpt. I  
II

(Brass)  
(1)  
Tbn. I  
II

Organ  
(1)



# Easter Hymn

Tune

Tpt. I  
Tpt. II

(Brass)  
2

Tbn. I  
Tbn. II

Organ  
(2)

# Gelobt Sei Gott

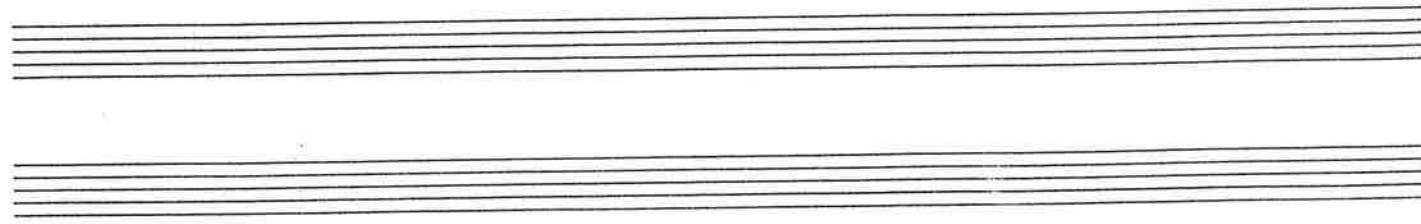
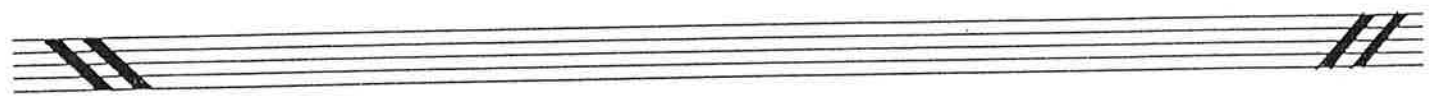
Tune

Tpt. I  
Tpt. II

(Brass)  
(1)

Tbn. I  
Tbn. II

Organ  
(1.)





# Gelobt Sei Gott

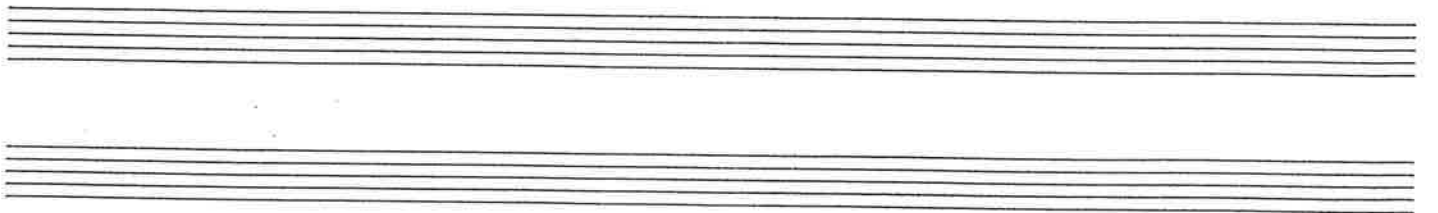
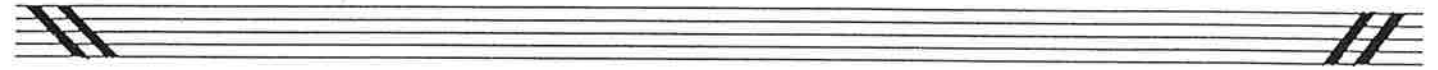
Tune

Tpt. I  
II

(Brass)  
(2)

Tbn. I  
II

Organ  
(2)



# Chesterfield

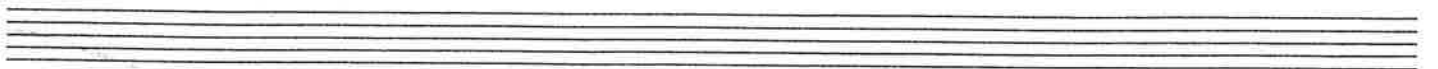
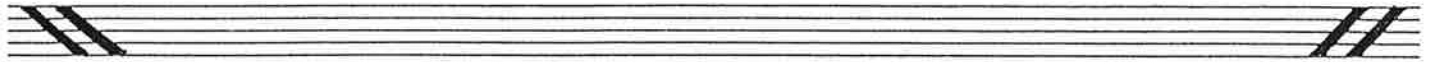
Tune

Tpt. I  
II

(Brass)  
(1)

Tbn. I  
II

Organ  
(1)



# Chesterfield

Tune

Tpt. I  
II

(Brass)  
(2)

Tbn. I  
II

Organ  
(2)

# CWM Rhondda

Tune

Trp I

(Brass (1))

Trp II

Organ (1)

# CWM Rhondda

Tune

(Brass (2))

Tpt. I  
Tpt. II

Tbn. I  
Tbn. II

Organ (2)

sdg  
8/18/91

