

A Child is Born Today

To Terese Noelle

William Sandys, 1833

Walter L. Pelz

Fl. II

Leisurely

mp

3

9

13



Alpheus Music Corp
Hollywood, Calif

Copyright © Walter L. Pelz
M-112 1977

1

16

Fl. *mf*

Tenor *mf*
Metaphone

Celeste *mf*

BASS *mf*
Metaphone

Voices *mp*
S.A. (unio) *mp*

1. A child is born to-

21

BASS *mf*
metal.

S. A. *mf*

- day, A child of high re-noun, Most wor-thy of a scep-tre, a

26

BASS *mf*
metal.

S. A. *mf* (div.)

Scep-tre and a crown: No-well, No-well, No-well, No-well singal we

Alpheus Music Corp
Hollywood, Calif

M-112

2

31

BASS metal. *mf*

S. A. *mf*

may Be-cause the King of Kings was born on Christ-mas

35

BASS metal. *mf*

Celeste *mf*

S. A. *mp*

day.

2. These tid-ings shep-herds

40

BASS metal. *mp*

Celeste *mp*

S. A. *mp*

heard In field watch-ing their fold, Were by an an-gel

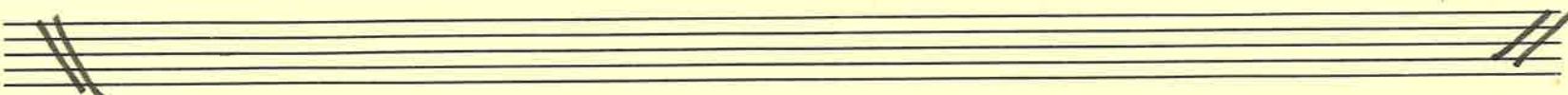
44

BASS metal.

Celeste

S.
A.

un- to them That night re-vealed and told: No-well, No-well, No-



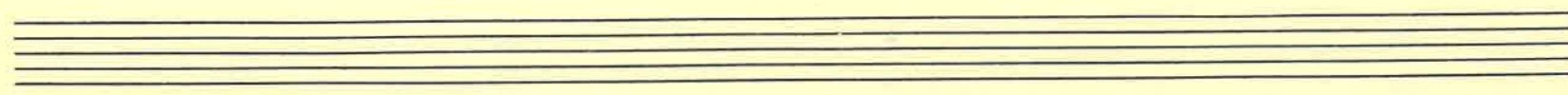
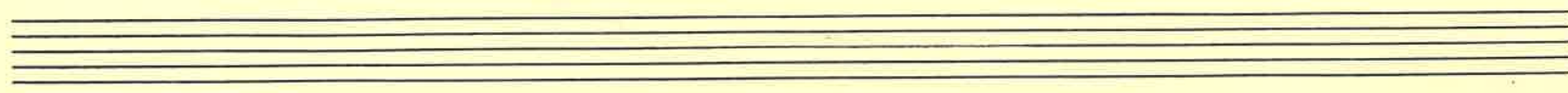
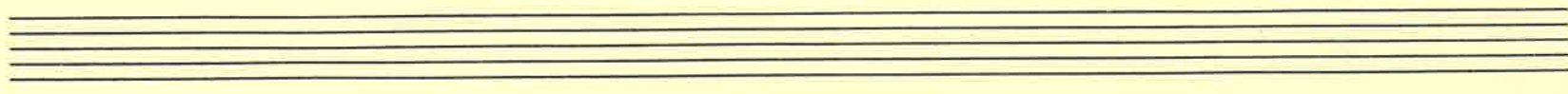
48

BASS metal.

Celeste

S.
A.

-ell No-well sing all we may Be-cause the King of



Alpheus Music Corp
Hollywood, Calif

M-112

52

BASS
metal

Celeste

S
A

Kings was born on Christ-mas Day.

56

Fl.

BASS
metal

Celeste

T.
B.

3. To whom the an-gel spoke,

60

Fl. I

tr. *tr.*

T. B.

Say - ing, "Be not a - fraid; Be glad, poor sil - ly shep - herds, Why

64

Fl. I

8va

Tenor - Alto - Metal.

T. B.

are you so dis - mayed? No - well, No - well, No - well No -

68

Fl. I

8va

Tenor - Alto - Metal.

T. B.

well sing all we may Be - cause the King of Kings was

72

8va

Fl.

Tenor-
Alto
meta

Celeste

mf

mf

T.
B.

born on Christ-mas Day

76

(to be played)

Tenor-
Alto
meta

Celeste

mf

mf

S.
A.

T.
B.

4. For lo! I bring you tid - ings of glad-ness and of



80

Tenor-
Alto-
Bass-
Metal

S.
A.

T.
B.

mirth which com-eth to all peo ple by this ho-ly in-fant's

84

Tenor-
Alto-
Bass-
Metal

S.
A.

T.
B.

birth No-well, No-well, No-well, No-well sing all we

88

Tenor-
Alto-
Bass-
Metal

S.
A.

T.
B.

may Be-cause the King of Kings was born on Christ-mas

92

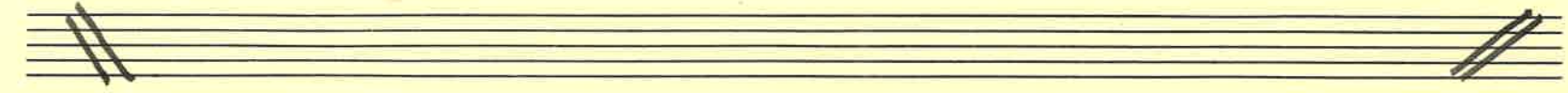
Tenor-
Soprano
Mezzo

Celeste

S.
A.

Day.

5. And



96

F12

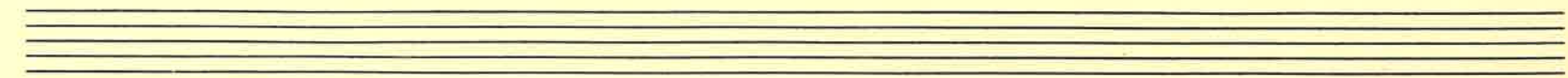
Celeste

tr

Sva

S.
A.

as the an-gel told them, so to them did ap-pear They



100

Flute part for measure 100, treble clef, key signature of one sharp (F#).

Celeste part for measure 100, consisting of two staves with chords and rests. Includes markings '8va' and '8va - - - - -'.

Vocal parts for measure 100. Soprano (S) and Alto (A) parts with lyrics: "found the young child Je - sus with Ma - ry His mo - ther dear No -". Tenor (T) and Bass (B) parts are also present.

104

Flute part for measure 104, treble clef, key signature of one sharp (F#).

Celeste part for measure 104, consisting of two staves with chords and rests. Includes markings '8va' and '8va - - - - -'.

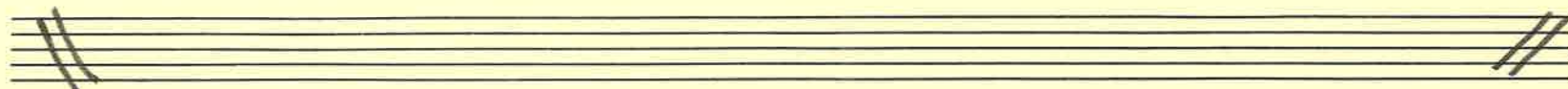
Vocal parts for measure 104. Soprano (S) and Alto (A) parts with lyrics: "well, No - well, No - well No - well sing all we may be -". Tenor (T) and Bass (B) parts are also present.



108 *tr* 

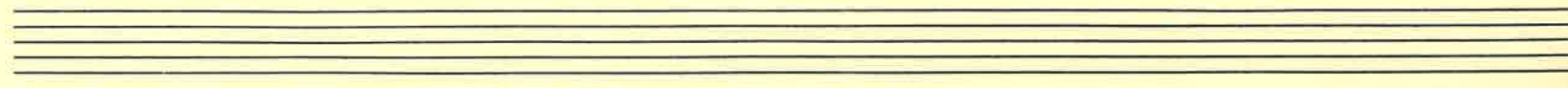
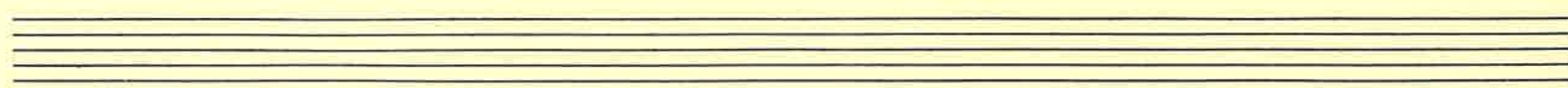
Celeste 

S. *mp*
A. *mp*
cause the King of Kings — was born on Christ-mas Day No-
B. *mp*
No-well



112 *sva* 

S. *mp*
A. *mp*
well, No-well, No-well No-well sing all we may No-well Be-
B. *mp*
No-well



116

Celeste

S. S. A.

poco rit. *dim. to end*

cause the King of Kings was born on Christmas Day

poco rit. *dim to end*

cause the King of Kings

120

Celeste

S. S. A.

pp

